



# Ravenswood & Woodcliff Assembly Instructions

## Tools required for assembly

Drill  
3/32" drill bit  
7/32" drill bit

Tape measure  
Pencil or punch  
Phillips tip for drill

Models	RTV-1 WTV-1	RTV-3 WTV-3	RTV-4 WTV-4	RTV-7 WTV-7	RSV-1 WSV-1	RSV-3 WSV-3	RSV-4 WSV-4	RSV-6 WSV-6
<b>Parts</b>								
Side towers	1pr	1pr	1pr	1pr	1pr	1pr	1pr	1pr
Video stand			1				1	
Tall Video One Pc. Top	1	1	1					
Bridge shelf	1	1	1					
Grill frame		1		1		1		
Bridge cabinet				1				
Breakfront panels				2				
Short Video One Pc. Top					1	1	1	1
Pocket door cabinet								1
<b>Hardware</b>								
1-1/4" no. 8 flathead screw	6	6	14	14	8	8	16	24
Shelf support	32	32	32	32	32	32	32	32
Double roller								
Catch & strike		4		4		4		
1/2" no. 6 panhead screw		8		8		8		
1/2" no. 4 panhead screw	4	12	4	12		8		
Three pc. Sleeve connector	4	4	4	8				
Flipworks #331 Media Tray	12	12	16	12			4	4
Adhesive tab	48	48	72	48			24	24

Before proceeding with installation determine placement of wall unit.

For rear projection systems: Place the TV in the required position before placing cabinets.

For direct view systems: Position video stand first and then side towers.

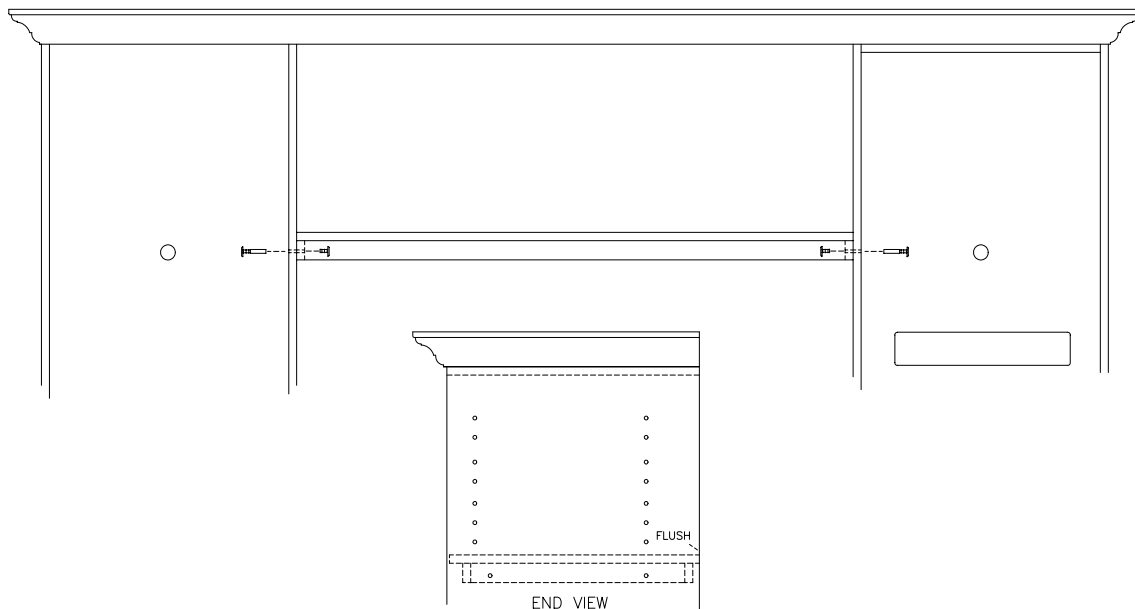
Once TV is in position refer to step 1 for proper positioning and levelling of cabinets.

## 1. CABINET POSITIONING

- Level and plumb cabinets in final position before beginning assembly.  
Use a spirit level and shims if necessary
- Position audio towers so that they are the correct distance apart.  
44" for direct view system with video stand
- Use the exact length of the cut to size bridge shelf to position side towers for rear projection systems.

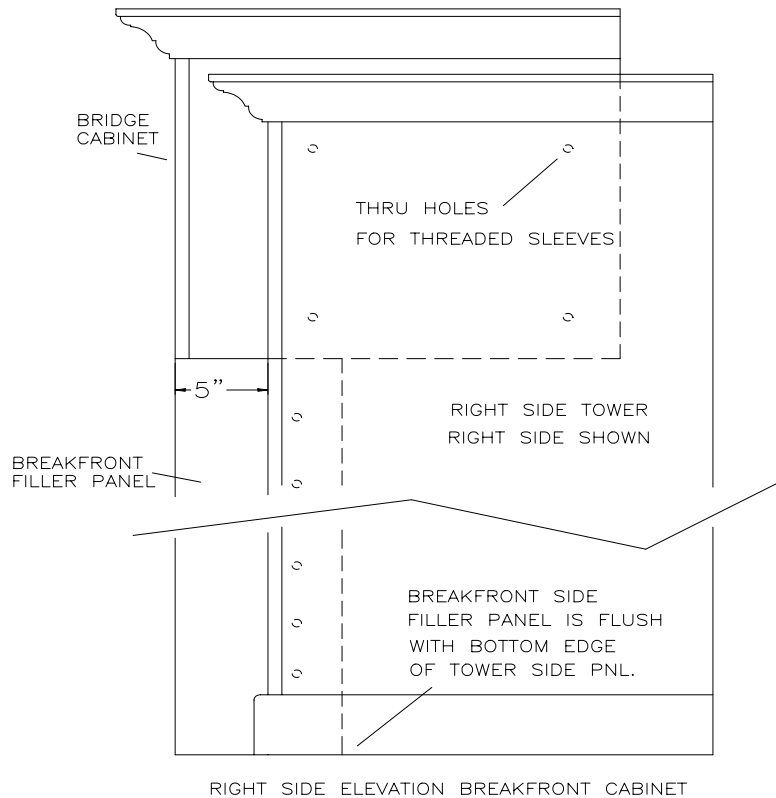
## 2. BRIDGE SHELF INSTALLATION FOR RTV-1,WTV-1, RTV-3,WTV-3, RTV-4,WTV-4.

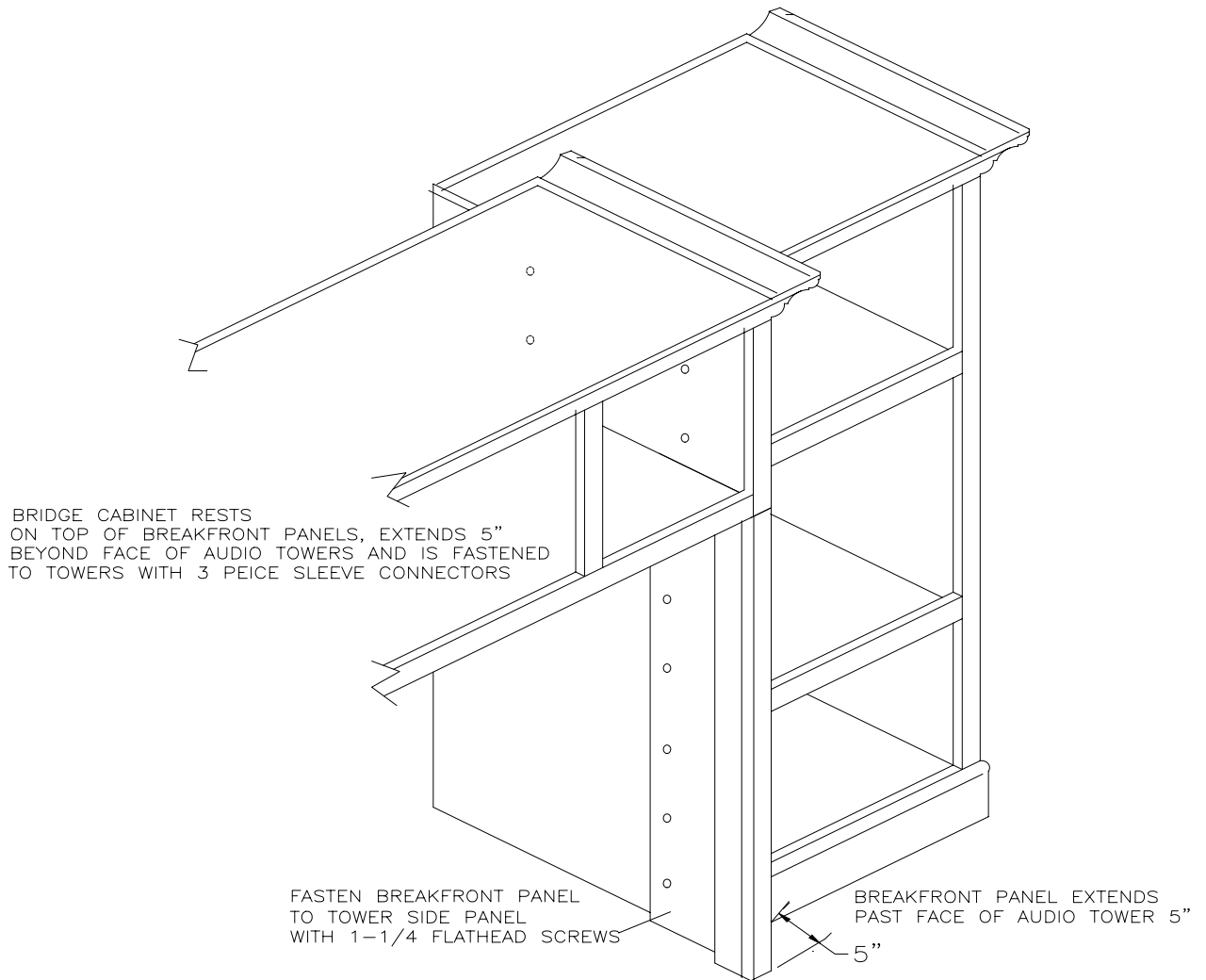
- Determine desired height of the shelf according to the height of the RPTV.
- The shelf can be positioned between the side towers and set on top of the RPTV to easily mark locations.
- The shelf is designed so that the rear hole in the bridge shelf cleat and the rear set of side tower shelf support holes line up front to back.  
(NOTE) If it is determined that one of the shelf row holes is at the proper height, you can drill through the hole from the inside of cabinet with the 7/32" drill bit
- Use a "scrape" wood board on the outside of side tower to avoid damaging the side tower side panel when the drill bit breaks through on the other side.  
(NOTE) If the rear shelf row holes cannot be used, mark hole locations on side panels using the 1/4" holes in bridge shelf cleats.
- Once the 4 holes are marked, drill through side panels with the 7/32" bit.  
(NOTE) Back up inside of side tower side panels as previously noted.
- Use the 3 pc. sleeve connectors to secure the bridge shelf to the side towers.
- Thread one screw into sleeve about 4 turns.
- Feed the sleeve and screw through the 7/32" through hole from the inside of tower.
- Line up the remaining screw at bridge shelf cleat hole and fasten loosely.
- Do not tighten completely until all 4 screws are in position.



### 3. BREAKFRONT CABINET INSTALLATION FOR RTV-7, WTV-7

- Fasten the breakfront vertical filler panels to the tower interior side panels with the 1-1/4 no. 8 flathead screws. (NOTE) Breakfront fillers are machined in mirror pairs.
- Leave 5" of filler panel exposed beyond face of side towers.
- Flush bottom end of filler panel with bottom end of tower sides.
- Once side fillers are installed, position side towers so that they are the same distance apart as the width of the bridge cabinet.
- Position the bridge cabinet between the towers, resting on top of the filler panels. Clamp the bridge cabinet to the side towers.  
(NOTE) Bridge cabinet projects 5" beyond face of side towers, and is flush with front edge of fillers.
- Mark and drill 4 equally spaced holes in the upper compartment of each interior side tower side panel.
- Drill through tower and bridge cabinet side panels with the 7/32" drill bit.  
(NOTE) Shelf support row holes can be used to eliminate measuring. Use a back up board against interior bridge cabinet side panel to eliminate damaging side panel when drill bit breaks through.
- Use the 3 piece sleeve connectors to fasten the bridge cabinet to the side towers.
- Do not tighten screws completely until all screws are in position and cabinet is in final position.



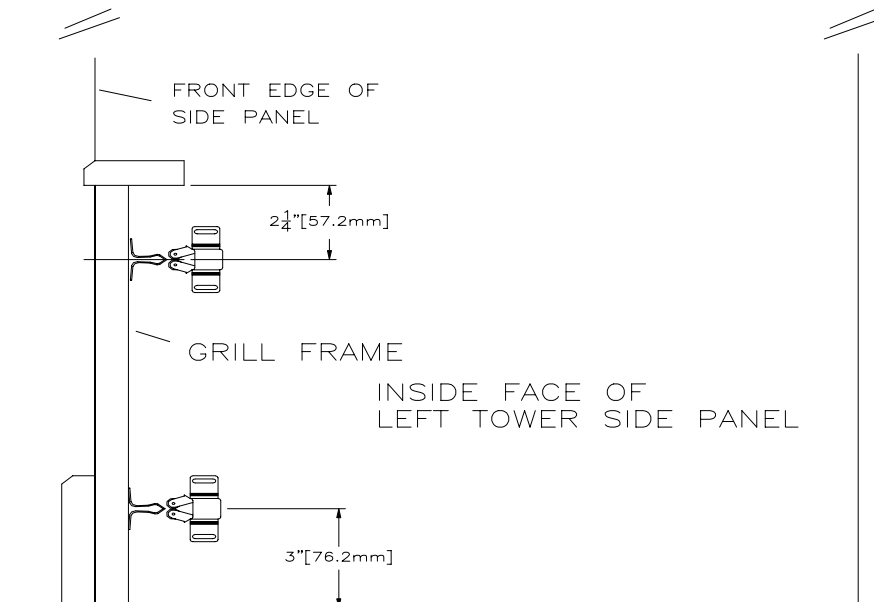


BREAKFRONT ASSEMBLY DETAIL

#### 4. GRILL FRAME INSTALLATION FOR RTV-3, WTV-3, RTV-7, WTV-7, RSV-3, WSV-3.

**Note:** Grill frame will be mounted to breakfront filler panels for RTV-7 & WTV-7 models.

- Using the template supplied, mark out the locations for the 4 roller catch strikes on the rear side of the grill frame.
- Drill eight  $\frac{3}{32}$ " diameter x  $\frac{9}{16}$ " deep pilot holes at marks. Use tape on drill bit to mark depth of hole.
- Use the  $\frac{5}{8}$ " no. 5 panhead screws to fasten the strikes.
- Place the roller catches onto the mounted strikes, and position the grill frame between the towers so that the base moulding on the towers and grill frame line up, and face of grill frame is flush with face of side panels.
- Mark the hole locations for the roller catches on the side tower side panels, 2 holes per roller catch.
- Drill a  $\frac{3}{32}$ " pilot hole at the marks  $\frac{9}{16}$ " deep. Mark drill bit with tape so as not to drill through side panels.
- Fasten the roller catches to the side tower side panels with the  $\frac{1}{2}$ " no. 6 panhead screws.
- Place the grill frame into place. Holes in roller catches are slotted for front to back adjustment if grill frame position needs to be adjusted slightly.

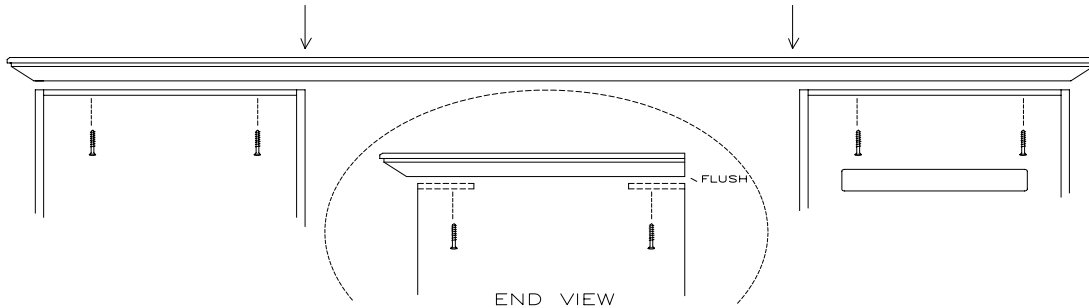


Refer to enclosed spec sheet for installation of software storage rails. Use the adhesive tabs to fasten the rails to the slide out trays.

Video stand trays will hold one row of software. Tall video trays will hold three rows of software.

**5. SHORT VIDEO ONE PIECE TOP INSTALLATION FOR RSV & WSV SYSTEMS ONLY.**

- Position top onto side towers.  
(NOTE) The top panel is sized to have a 1/8" overhang at both ends of top and to be flush at back edge of cabinets.
- Fasten the top with the 1-1/4" no. 8 screws.  
(NOTE) Clamp or hold the top panel tight to top of side towers while driving screws.



**6. TALL VIDEO ONE PIECE TOP INSTALLATION FOR RTV-1, WTV-1, RTV-3, WTV-3, RTV-4, WTV-4.**

- Position top onto side towers.  
(NOTE) The top panel is sized to have a 1/8" overhang at both ends of top and to be flush at back edge of cabinets.
- Fasten the top with the 1-1/4" no. 8 screws.  
(NOTE) Clamp or hold the top panel tight to top of side towers while driving screws.

